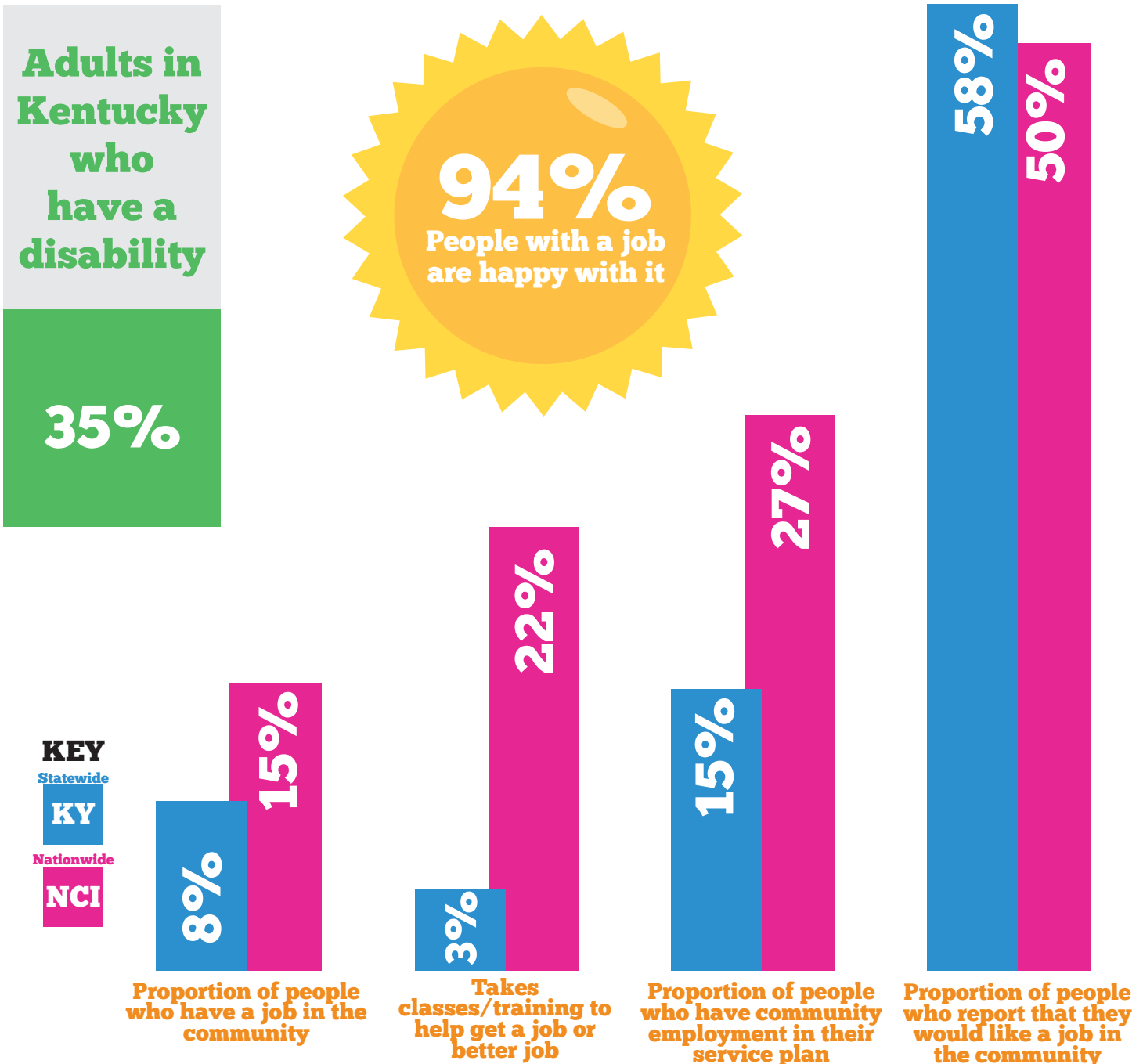


# Employment & Disability



Kentucky National Core Indicators

While only a small percentage of people with disabilities in Kentucky participating in National Core Indicators are gainfully employed, the data find that all of those people are satisfied with their jobs. National employment numbers for people with disabilities are far lower than for those without disabilities and Kentucky lags even further behind. The data do show an increase in both employment and interest in employment in Kentucky over the past few years. With new initiatives and policies, such as Kentucky becoming an Employment First state, it is hoped that more Kentuckians with disabilities will become engaged in the workforce.



If you are interested in exploring the work options that are available to you can start by contacting the Office of Vocational Rehabilitation.

# Resources



Kentucky National  
Core Indicators

A variety of resources that can help you learn about employment in Kentucky



**KentuckyWorks**  
kentuckyworks.org

Everyone can work

It takes a team to help youth with disabilities achieve their potential and get meaningful work after high school. Find helpful resources for every member of the employment team.

With the right support and opportunities, everyone can share their talents and earn a living. Learn more about how Kentucky supports Employment First as a priority.

The Kentucky Office of Vocational Rehabilitation assists Kentuckians with disabilities to achieve suitable employment and independence.

The Vocational Rehabilitation (VR) program helps people with disabilities prepare for, enter, engage in or advance in competitive employment.



[ovr.ky.gov](http://ovr.ky.gov)

## Disability Benefits 101

working with a disability in Kentucky



Disability Benefits 101 gives you tools and information on health coverage, benefits, and employment. You can plan ahead and learn how work and benefits go together.

<https://ky.db101.org/>



[www.apse.org](http://www.apse.org)

Employment First is the next chapter in the civil rights of people with disabilities. It is built on the hard work and sacrifices of heroes, and grows stronger with the contributions of people from every walk of life. Learn more about what we believe and become a part of APSE's thriving community.

## KENTUCKY DISABILITY RESOURCE MANUAL

Online directory with resources on advocacy, assistive technology, community living, education, employment, finances, health, mental health and transportation.

<http://resources.hdiuk.org/>



Supported Decision-Making is just a way of saying how we all make choices. We all need help making decisions, every single day. You probably ask someone you know for advice, to help you understand what's going on and what you need to do; when you do that, you're using supported decision-making. Supported decision-making can be used as an alternative to guardianship as well as within a guardianship.

[www.mychoiceky.org](http://www.mychoiceky.org)



Kentucky National  
Core Indicators

Kentucky Division of  
Developmental and  
Intellectual Disabilities



Human Development  
Institute